

Transport technology / Platform superstructures / Construction profiles

Flexibility – light & easy

The GETO Frame Alu base assembly system



NEW

Titgemeyer Group has introduced a new universal-type base assembly system. GETO Frame Alu is a flexible, efficient and weight-saving solution with an abundance of innovative features.

Flexibility

The trimmable profiles and aligned sliding arms significantly reduce the time needed to fit the cross-members to the longitudinal members. What's more, the system comes supplied with matching pre-drilled holes for installing the side rails / outer frame. An installation kit comprising all of the fasteners required to perform the work is also available.

GETO Frame Alu is a universal system and not confined to use on the GETO range of products. Separately available accessory kits can be employed to further extend the base assembly: to increase the load-bearing capacity of the bulkhead, for example, or to enable attachments to be retrofitted.

Lightness

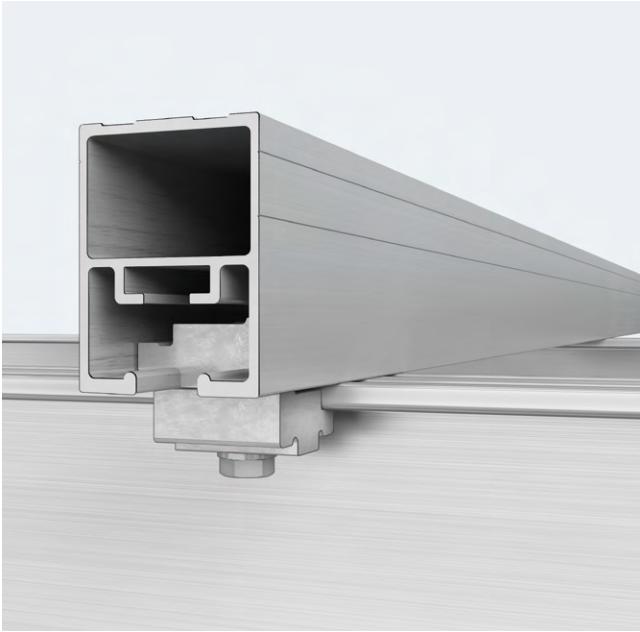
The profiles have been constructed using anodised aluminium to create a lighter design than its conventional counterparts and thus offer the potential for a higher vehicle payload. The material also lends the system an upscale look.

Benefits of the system at a glance

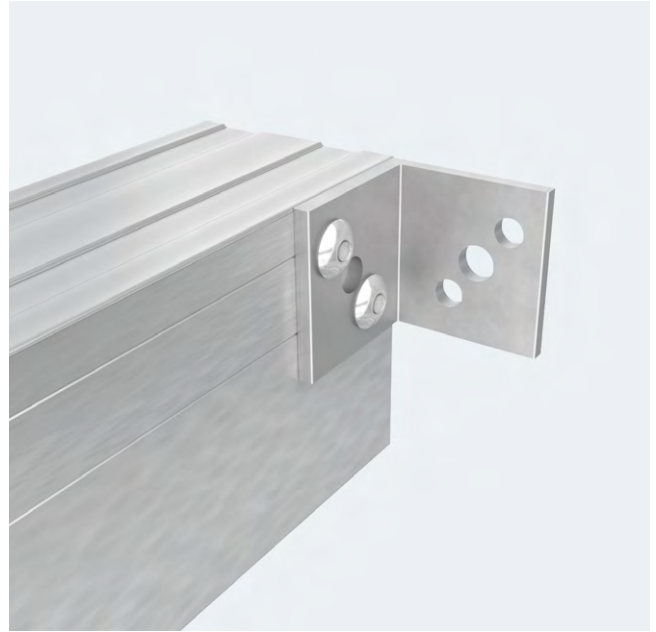
The GETO Frame Alu base assembly system wins on:

- higher vehicle payload.
- flexible assembly and layout.
- upscale look.
- accessory kits for additional applications.

Get in touch! We'll be happy to advise you in person!



Cross-member installed on longitudinal member using a threaded plate, clamping plate and bolt.



Aluminium bracket installed in readiness to fasten the side rail profile



Sample application: Reinforcement kit for greater load-bearing capacity on the bulkhead (auxiliary longitudinal member cut from crossbeam, optional on customer request)



Sample application: Toolbox with accessory kit for retrofitting attachments

Titgemeyer GmbH & Co. KG
 Hannoversche Straße 97
 49084 Osnabrück / DE

P.O. Box 43 20
 49033 Osnabrück / DE

T +49 541 5822-0
 E info@titgemeyer.com
 W titgemeyer.com

