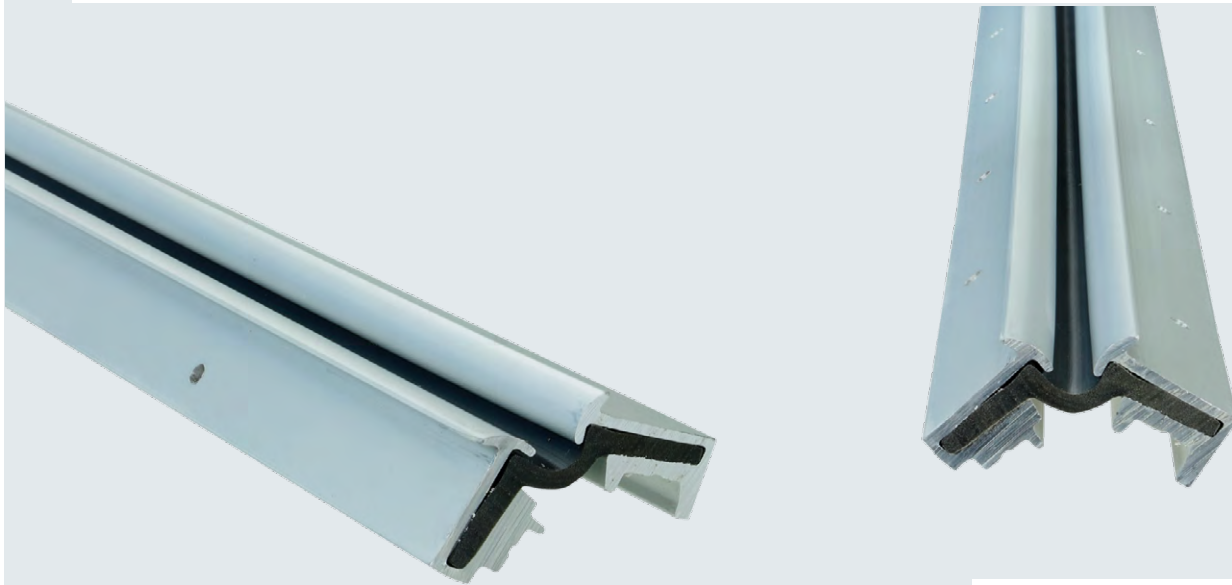


## Hinge and seal in one

Titgemeyer produces the versatile TILA door hinge system.



### Advantages at a glance

The TILA door hinge is a hinge system that is considered a better alternative to conventional hinges wherever doors, flaps and lids are installed. It is used in bodywork and vehicle construction, in box and box bodies, sales vehicles and buses, but also in equipment, housing, aggregate and machine construction - whether as a single element or linked together.

### Made by Titgemeyer

We manufacture the articles in our own factory. For you, this means: cost advantages and high flexibility.

### Simply better

Our TILA door hinge is maintenance-free, permanently elastic and opening angles of over 270° can be achieved. It is a hinge with simultaneous sealing function.

Due to the small outward projection, it facilitates compliance with the legally prescribed vehicle outer width - in contrast to conventional solutions.

In the closed position, the two aluminium profiles clamp into each other - making it customs safe.

- Installation between door, flap and wall element or frame (not as conventionally screwed on the outside)
- Contribution to road safety due to the only slight projection to the outside
- Cost-effective production of special lengths and special bores possible
- Maintenance-free
- Largely wear-free
- Delivery ready for assembly



Production at our Lotte plant

631 390 000



## End pieces

Suitable for frame profiles with a rebate depth of 15-16 mm and a rebate width of 32 mm. Article no. 631 390 000 right, 631 391 000 left (only TILA 180°)

## Load-bearing capacity

Measured variable	Polyether-TPU	Testing method
Density	1,12 g/cm <sup>3</sup>	ISO 2781
Hardness Shore A	87	ISO 868
Tensile strength	45 N/mm <sup>2</sup>	ISO 37
Elongation at break	600 %	ISO 37
Tear propagation resistance	700 N/mm	DIN ISO 34-1Bb
Compression set (24h@70°C)	45 %	DBL 5559
UV-resistance	up to 1000 hours	DIN EN ISO 4892-2

## Load limits

Side door	Value	Temperature	Duration
Height in mm	3000	- 40 to + 80°C	Continuous use
Width in mm	1200	+ 120 °C	maximum 2 hours
Weight in kg	50		

Größere Abmessungen und Gewichte nach Prüfung möglich

## Temperature stability

## Easy assembly

We deliver the TILA door hinge in an opened, pre-punched and therefore ready-to-install condition.

## Materials

The hinge band consists of Aluminium profiles (EN AW-AMgSi | EN-AW 6060) and thermoplastic polyether polyurethane.

## Resistance

- High abrasion resistance
- Very good low-temperature flexibility (e.g. it only breaks at -60 °C)
- Very good hydrolysis and microbe resistance
- No significant colour changes, no superficial cracking and no serious change in tensile strength and elongation at break after up to 1000 h of weathering

**Titgemeyer GmbH & Co. KG**  
Hannoversche Straße 97  
49084 Osnabrück / DE

T +49 541 5822 - 0  
E info@titgemeyer.com  
W titgemeyer.com